



enquiries@cedstone.co.uk

Call us: +44(0) 203 960 2027

www.cedstone.co.uk

# Tindal Square, Chelmsford

## Case Study

Client: **Chelmsford City Council**

Contractor: **Dyer and Butler**

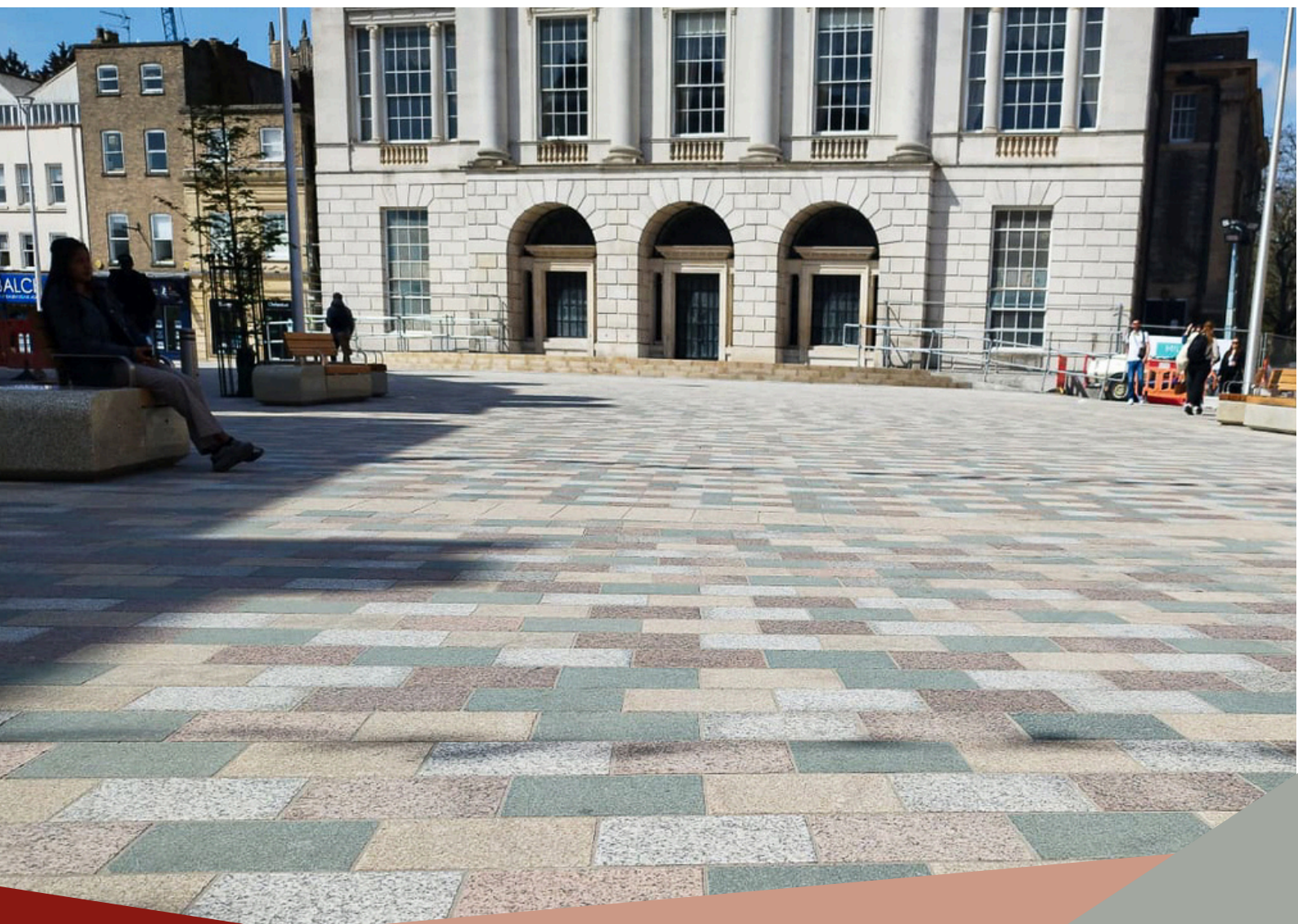
Designer: **Jacobs UK Ltd**

### Materials supplied:

*Portuguese Granite Paving, Grampian Granite Paving and Green Schist Paving*

A wonderfully vibrant redevelopment of Tindal Square in Chelmsford; using multiple granite paving elements to bring colour, warmth and vibrancy to central Chelmsford.

CED stone supplied granites for this project with stones from Portugal and Scotland. The paving stones are supplied mostly with an 80mm depth, in various element sizes, with changing paving colour mixes. The overall supply over all phases, covered an area of circa 2500 M<sup>2</sup>. As well as the rectangular paving, we also supplied substantial areas with trapezoidal and radial elements.





The Scottish stone is the striking Murray Green Schist quarried on the West Coast of Scotland and supplied here, with a flame textured top surface.

The Portuguese flame textured colours are the silver grey Ariz and the Monforte Pink, with the Saffron Beige being supplied with a shot blasted top surface to maintain and highlight that materials, beige and yellow shadings.

We also supplied the black Angola granite decorative paving and ribbed tactile sections, which are also worked and produced on modern CNC machines at the Portuguese factory.

Transforming Tindal Square has offered an excellent opportunity to create a new public square at the head of the High Street, producing significant benefits for visitors and residents, as well as boosting the local economy. The end result is a colourful space which gives a warm feel and has really lifted the usability and functionality of the Square.

