



tuffbed 2-pack Type 35, Permeable, Low Carbon Bedding Mortar for Paving

tuffbed 2-pack is a two-part product. The dry powder binder is packed in 25 kg bags and the aggregate packed separately in 25 kg bags as a, 2-6 mm graded, angular crushed igneous rock (tuffgrit). Binder and aggregate bags are delivered to site on separate pallets. The mixing, see below, is done by the laying team at the ratio of 4x 25kg bags of aggregate to 1x 25 kg bag of binder. Before commencing work, it is advisable to check that there are 4no. bags of aggregate to every 1no. bag of binder.

Mixing

Avoid mixing more than will be used within 30 minutes at an ambient 20°C.

Full batches using a large forced action mixer or large 5/3½ diesel freefall mixer

Each mix (125 kg) will require 4 x 25 kg bags of tuffgrit aggregate to 1x 25 kg bag of tuffbed 2-pack binder and 7 litres of water. To ensure consistency of a 125 kg batch, the bedding mortar should ideally be mixed using a forced action mixer in the following sequence;

- Initially add four 25 kg bags of tuffgrit aggregate to the mixer. Do not add any water at this stage.
- Then add 1x 25 kg bag of tuffbed 2-pack binder. Do not add any water at this stage. Mix until the tuffgrit aggregate is evenly coated with the tuffbed 2-pack binder. This typically takes around 30 seconds to 1 minute.
- Once the aggregate is evenly coated with binder, slowly add 7 litres of water.
- The minimum volume of water for each 125 kg mix is 7 litres. In dry and hot conditions, compensate when necessary by adding a small amount of additional water.
- After approx. 4 minutes of mixing the final consistency of the mix should be such that tuffbed 2-pack can retain the form of a 'snowball' in the hand.

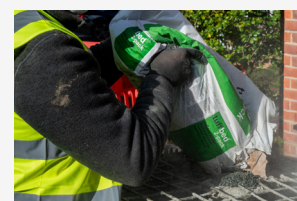
Half batches using a regular Belle[®] mixer

Half mixes (62.5 kg) can be prepared in a Belle[®] mixer using 2x 25 kg tuffgrit aggregate, 12.5 kg tuffbed 2-pack (half bag) and 3.5 litres water.

- The mixer should be clean, dry and should not be running. Do not add any water at this stage.
- Add two 25 kg bags of tuffgrit aggregate to the mixer.
- Divide a 25 kg bag of tuffbed 2-pack binder in two, by laying the bag flat on the ground, evening the contents and cutting the bag in half by cutting along the dotted line. Lift at the centre of the bag to raise the two halves and separate them.
- Add half of the 25 kg bag (12.5 kg) of tuffbed 2-pack binder to the mixer.
- Start the mixer and mix until the tuffgrit aggregate is evenly coated with the tuffbed 2-pack binder. This typically takes around 30 seconds to 1 minute.
- Once the aggregate is evenly coated with binder, slowly add 3.5 litres of water.
- The minimum volume of water for each 62.5 kg mix is 3.5 litres. In dry and hot conditions, compensate when necessary by adding a small amount of additional water.
- While mixing, tilt the Belle[®] mixer forward as far as possible without spilling the mix. This is necessary to ensure a thorough even mix, without lumps or dry clumps.
- After approx. 4 minutes of mixing the final consistency of the mix should be such that tuffbed 2-pack can retain the form of a 'snowball' in the hand.



Clean the area



Mix binder and aggregate
1 binder : 4 aggregate



Add water to mix



Apply tuffbond to concrete base and paving unit



Lay mixed mortar onto the base and bed the paving unit





tuffbed 2-pack Type 35, Permeable, Low Carbon Bedding Mortar for Paving

Laying Process

Use of priming mortar

- When laying over compacted granular or bituminous base tuffbond priming mortar should be brush applied to the entire underside of the paving units as they are placed on to the fresh tuffbed 2-pack bedding mortar.
- When laying over a concrete base tuffbond priming mortar should be brush applied to the entire clean surface of the concrete base, immediately prior to tuffbed 2-pack bedding mortar being placed. tuffbond should also be brush applied to the entire underside of the paving units as they are placed on to the fresh tuffbed 2-pack bedding mortar.
- tuffbond is applied as a 2-3 mm thick coat.

Placing tuffbed 2-pack

- Place the freshly mixed tuffbed 2-pack bedding mortar to the required depth, allowing a surcharge for positioning and tapping the paving units down to level. Do not compact the freshly placed tuffbed 2-pack bedding mortar before placing the paving unit and only place sufficient bedding mortar for paving units to be laid immediately.
- Immediately place the primed paving units on to the fresh tuffbed 2-pack bedding mortar and tap down into position.
- Do not walk on or allow pedestrian access over newly laid areas until the bedding mortar has gained sufficient strength, after which jointing work can commence. This is typically not less than 12 hours, longer in cold weather.
- Do not allow vehicular access over newly laid areas until the bedding mortar has gained sufficient strength; this may have been described in a design specification and is dependent on traffic loading and ambient temperature.



Clean the area



Mix binder and aggregate
1 binder : 4 aggregate



Add water to mix



Apply tuffbond to concrete
base and paving unit



Lay mixed mortar onto the
base and bed the paving unit

Demonstration Video

Scan QR code to view



www.steintec.co.uk/tuffbed2-pack/#video